

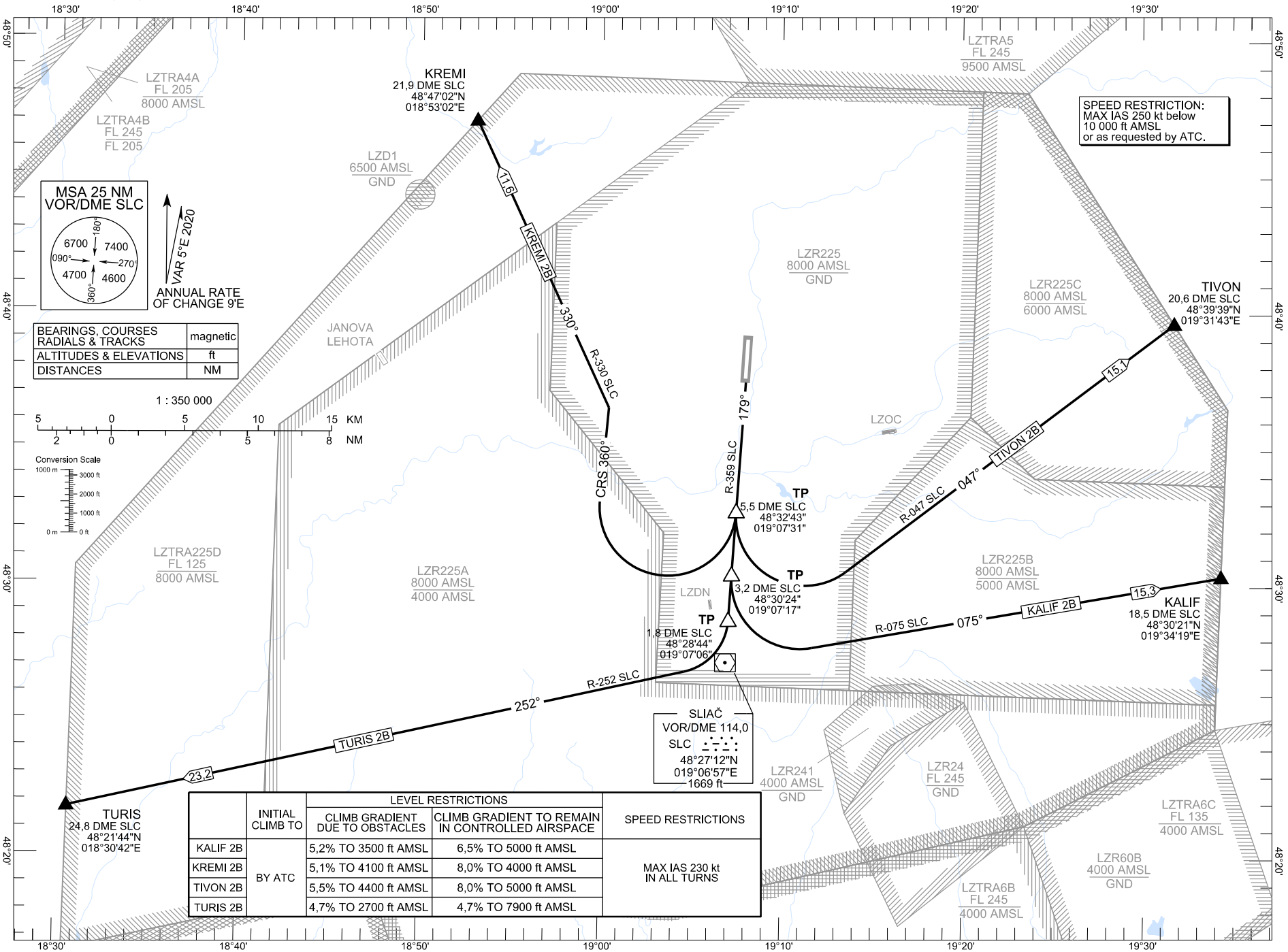
STANDARD DEPARTURE CHART -
INSTRUMENT (SID) - ICAO

TRANSITION ALTITUDE
10 000 ft

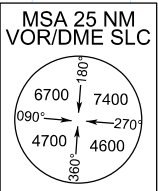
SLIAČ RADAR
SLIAČ TOWER
119.155
122.905

SLIAČ (LZSL)
SID RWY 18
ACFT CAT A/B/C/D

CHANGES: MAG VAR; MSA; new JANOVA LEHOTA AD established



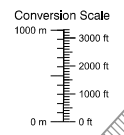
SPEED RESTRICTION:
MAX IAS 250 kt below
10 000 ft AMSL
or as requested by ATC.



ANNUAL RATE
OF CHANGE 9'E
VAR 5'E 2020

BEARINGS, COURSES RADIALS & TRACKS	magnetic
ALTITUDES & ELEVATIONS	ft
DISTANCES	NM

1 : 350 000



	INITIAL CLIMB TO	LEVEL RESTRICTIONS		SPEED RESTRICTIONS
		CLIMB GRADIENT DUE TO OBSTACLES	CLIMB GRADIENT TO REMAIN IN CONTROLLED AIRSPACE	
KALIF 2B	BY ATC	5,2% TO 3500 ft AMSL	6,5% TO 5000 ft AMSL	MAX IAS 230 kt IN ALL TURNS
KREMI 2B		5,1% TO 4100 ft AMSL	8,0% TO 4000 ft AMSL	
TIVON 2B		5,5% TO 4400 ft AMSL	8,0% TO 5000 ft AMSL	
TURIS 2B		4,7% TO 2700 ft AMSL	4,7% TO 7900 ft AMSL	